



Cauldwell

PROPERTY SERVICES



43 Edzel Crescent, Milton Keynes, MK4 4EU

£525,000

CAULDWELL are delighted to offer for sale this stunning four-bedroom, three-storey detached family home, ideally positioned within the popular Westcroft area of Milton Keynes and enjoying attractive open parkland views to the front.

This beautifully presented property offers spacious and versatile accommodation arranged over three floors, making it an ideal home for modern family living. The ground floor accommodation comprises a welcoming entrance hall, a dual-aspect living room providing an abundance of natural light, and a refitted kitchen/dining room fitted with a range of modern units and ample workspace. The kitchen area flows seamlessly into an insulated conservatory, creating a superb open-plan living and entertaining space overlooking the well-maintained rear garden. The ground floor is further complemented by a utility room and downstairs cloakroom.

To the first floor there is a spacious landing leading to the principal bedroom with en-suite shower room, a further bedroom and a family bathroom. The second floor offers two additional well-proportioned bedrooms, providing flexible accommodation ideal for children, guests or home working.

Externally the property enjoys a well-presented rear garden, perfect for outdoor relaxation and entertaining. To the side there is a detached garage along with a substantial driveway providing ample off-road parking.

ENTRANCE HALL

Stairs to first floor. Door to cloakroom, kitchen/dining room. living room. Radiator.

CLOAKROOM

Two piece suite comprising low level wc and wash hand basin. Understairs storage cupboard. Radiator.

LIVING ROOM 10'3" x 17'0" (3.14 x 5.19)

Dual aspect double glazed window to front with fitted blinds and double glazed window to side with fitted blinds. Two radiators. Coving to textured ceiling,

KITCHEN/DINING ROOM 17'0" x 9'8" (5.20 x 2.95)

Re-fitted with a range of soft close wall and base units with roll top worksurfaces incorporating one and half bowl sink drainer and mixer tap. Space for Range cooker and built in extractor Built in fridge freezer and dishwasher. Breakfast bar. Double glazed window to rear. Opening to conservatory. Radiator. Double glazed window to front. Arch to utility room

UTILITY ROOM

Fitted with wall and base units with worksurface. Plumbing for washing machine. Space for tumble dryer. Concealed wall mounted boiler. Double glazed door to side.

CONSERVATORY 17'4" x 8'2" (5.29 x 2.49)

Brick and UPVC double glazed construction with tiled roof, skimmed ceiling and inset lighting. Wall mounted heater. Power and lighting. Sliding double glazed door to rear.

FIRST FLOOR LANDING

Stairs to second floor. Door to bedroom one and four, family bathroom and airing cupboard. Double glazed window to rear. Radiator.

BEDROOM ONE 9'10",229'7" x 10'7" (3.,70 x 3.24)

Double glazed French doors to side. Built in cupboard. Feature radiator. Door to ensuite.

ENSUITE

Three piece suite comprising double tiled shower cubicle with wall mounted shower, low level wc and wash hand basin. Frosted double glazed window to rear. Heated towel rail.

BEDROOM THREE 10'7" x 9'11" (3.25 x 3.04)

Double glazed French doors to glass balustrade Juliette balcony to front. Radiator.

BATHROOM

Three piece suite comprising bath with shower attachment, low level wc and wash hand basin. Splash back tiling. Part tiled walls. Frosted double glazed window to rear. Radiator.

SECOND FLOOR LANDING

Doors to bedroom two and three. Double glazed sky light to rear.

BEDROOM TWO 10'5" x 9'11" (3.18 x 3.03)

Restricted head height
Two double door built in wardrobes. Double glazed window to front. Skimmed ceiling. Radiator.

BEDROOM FOUR 10'6" x 13'4" (3.21 x 4.07)

Restricted head height
Double glazed window to front Radiator.

REAR GARDEN

Enclosed and laid mainly to artificial lawn with brick and wooden fence surround. Gated side and rear access. Mature flower and shrub borders.

SINGLE GARAGE

Up and over door. Power and light. Graveled driveway with parking.

All measurements are approximate.

The area measurements are taken from the government EPC register.

The mention of appliances and/or services within these sales particulars does not imply that they are in full efficient working order. Please note that any services, heating systems or appliances have not been tested and no warranty can be given or implied as to their working order. **MORTGAGE & FINANCIAL** - The Mortgage Store can provide you with up to the minute information on all available rates. To arrange an appointment, telephone this office **YOUR HOME IS AT RISK IF YOU DO NOT KEEP UP REPAYMENTS ON A MORTGAGE OR OTHER LOANS SECURED ON IT.** Full quotation available on request. A suitable life policy may be required. Loans subject to status. Minimum age 18.

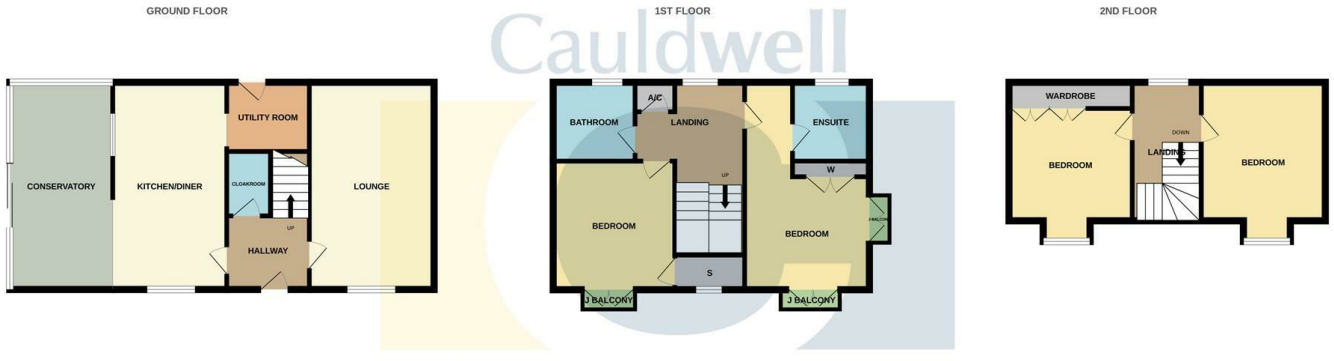
The above details have been submitted to our clients but at the moment have not been approved by them and we therefore cannot guarantee their accuracy and they are distributed on this basis. Please ensure that you have a copy of our approved details before committing yourself to any expense.

We routinely refer customers to Franklins solicitors, Gough Thorne and The Mortgage Store. It is your decision whether you choose to deal with them, in making that decision, you should know that we receive a referral fee in the region of £80 to £250 for recommending you to them

All clients are subject to identity and source of funds checks. We use a third party company to complete these for us. The charge is £60 inc vat per transaction which requires to be paid at your earliest convenience once your offer has been accepted, this enables us to conduct the verification checks we are obliged to do as per HMRC Anti Money Laundering guidelines.

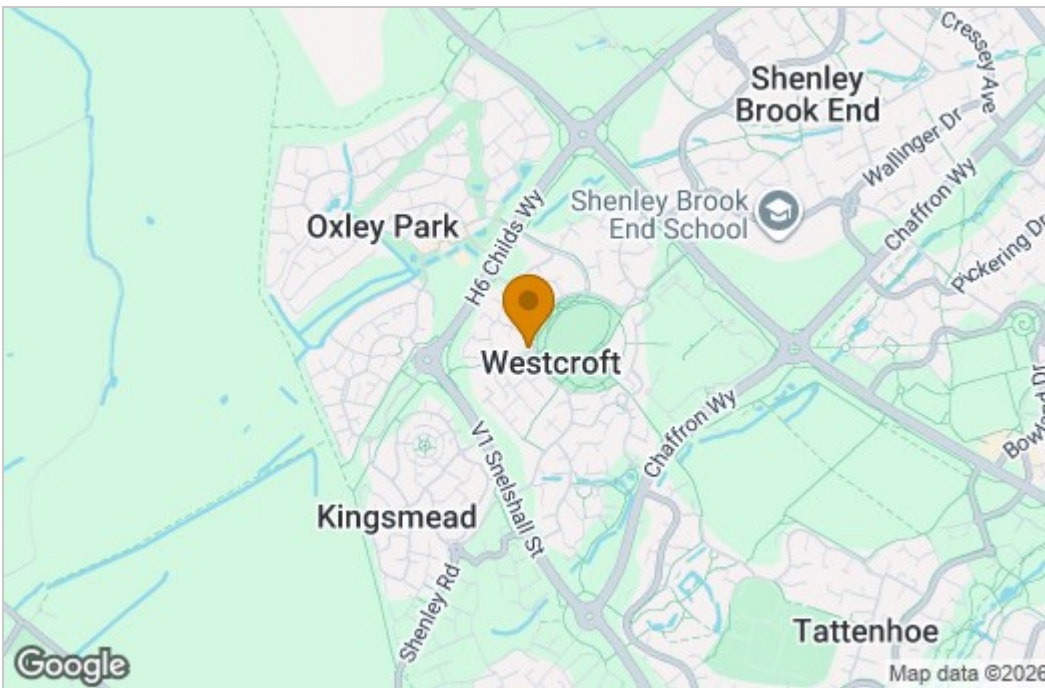
Photographs may be digitally enhanced for presentation purposes, including lighting and cosmetic adjustments. No structural or permanent features of the property have been altered, and buyers should satisfy themselves by inspection.

Floor Plan

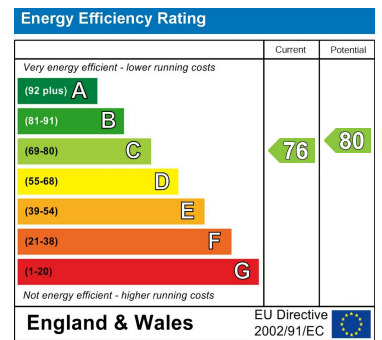


Whilst every attempt has been made to ensure the accuracy of the floorplan contained here, measurements of doors, windows, rooms and any other items are approximate and no responsibility is taken for any error, omission or mis-statement. This plan is for illustrative purposes only and should be used as such by any prospective purchaser. The services, systems and appliances shown have not been tested and no guarantee as to their operability or efficiency can be given.
 Made with Metropix ©2026

Area Map



Energy Efficiency Graph



These particulars, whilst believed to be accurate are set out as a general outline only for guidance and do not constitute any part of an offer or contract. Intending purchasers should not rely on them as statements of representation of fact, but must satisfy themselves by inspection or otherwise as to their accuracy. No person in this firm's employment has the authority to make or give any representation or warranty in respect of the property.